
United States Department of Agriculture
Cooperative State Research, Education, and Extension Service

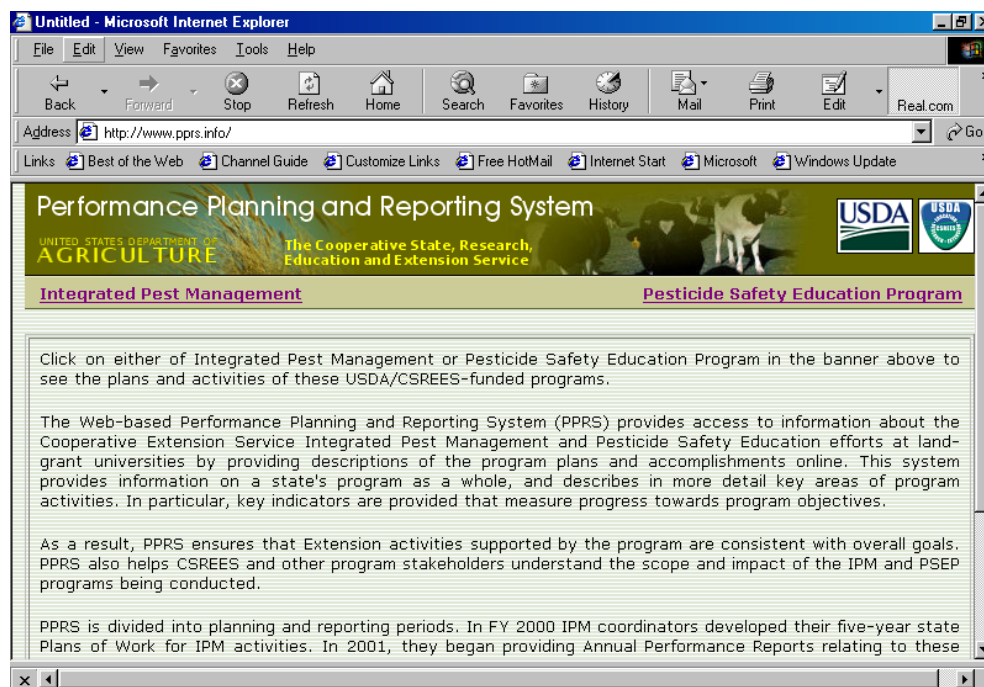


Performance Planning & Reporting System – IPM

Helping Integrated Pest Management Programs Report and Showcase Results!

The Web-based Performance Planning and Reporting System (PPRS) provides access to information about integrated pest management (IPM) implementation at land-grant universities by providing descriptions of program plans and accomplishments online. This system provides information on a state's program as a whole, and it describes key areas of program activities in more detail.

Land-grant university IPM coordinators choose areas of emphasis for the state IPM program that reflect the needs of the local clientele and program activities. Areas of IPM program emphasis may be crop centered (such as corn, cotton, or blueberries), audience centered (such as schools or community IPM), or activity centered (such as in-service training, plant disease diagnostics, or information dissemination). The program reports on targeted pests and specific indicators that point to progress toward national program objectives.



The PPRS system is viewable at: www.pprs.info. From this site, stakeholders can choose to view plans of work and annual reports of the Integrated Pest Management (IPM) Program and the Pesticide Safety Education Program (PSEP). It is intentionally designed with few graphics for fast and simple navigation.

In 1999, IPM programs developed a 5-year plan of work for fiscal years 2000 through 2004. Programs have already submitted annual reports on those plans for fiscal years 2000 and 2001.

This planning and reporting process strengthens State IPM programs in the following ways:

- ◆ By recording program goals and reporting on the results, coordinators identify important areas for needed funding at the state level.
- ◆ Information from these reports gives CSREES justification for providing funding and support for university-based IPM programs.
- ◆ Objectives and indicators help programs define their goals and determine planned activities to achieve those goals.
- ◆ Annual reports provide a consistent measurement tool for the effectiveness of the activities and a guide for change.

For each area of emphasis selected by an individual program, the IPM coordinator can report on the following indicators of progress toward national program objectives:

1. To safeguard human health and the environment through improved utilization of integrated pest management strategies and systems.
 - Number of production units or entities using IPM
 - Transition from high-risk to lower-risk pesticides
 - Total amount of high-risk pesticides applied
 - Diversity of IPM practices adopted
2. To increase the range of benefits obtained through improved utilization of integrated pest management strategies and systems.
 - Economic benefit obtained
 - IPM personnel employed
 - Satisfied IPM clientele
3. To increase the implementation of effective integrated pest management strategies and systems.
 - IPM strategies and systems validated
 - IPM educational materials delivered
 - People participating
 - Producers trained
 - Private sector personnel trained
 - Public sector personnel trained
 - Other Individuals trained
4. To enhance collaborations among stakeholders interested in the development and implementation of improved integrated pest management strategies and systems.
 - Public events involving collaborations
 - Non-federal dollars leveraged

What's next for PPRS – IPM?

The IPM program is more than halfway through its first 5-year reporting cycle. Within the next year, CSREES will ask for stakeholder input on ways to improve the system. In preparing for the next cycle, this stakeholder input process will utilize the newly developed IPM Roadmap.

State IPM Coordinators, Regional IPM Facilitators, Regional Pest Management Centers, and other stakeholders with an interest in the process will have an opportunity to share their views on the future of the reporting system.

PPRS was developed through a highly participatory process. It permitted land-grant universities and CSREES to jointly develop national objectives for the IPM program and identify appropriate indicators for assessing progress in reaching them.

It was designed to build on the accountability process already in place at partner institutions so that the federal reporting burden will be reduced. This includes a “success story” function that allows an IPM coordinator to submit information directly to the AREERA reporting system.

For more information contact: Mike Fitzner – mfitzner@csrees.usda.gov or Bill Hoffman – whoffman@csrees.usda.gov